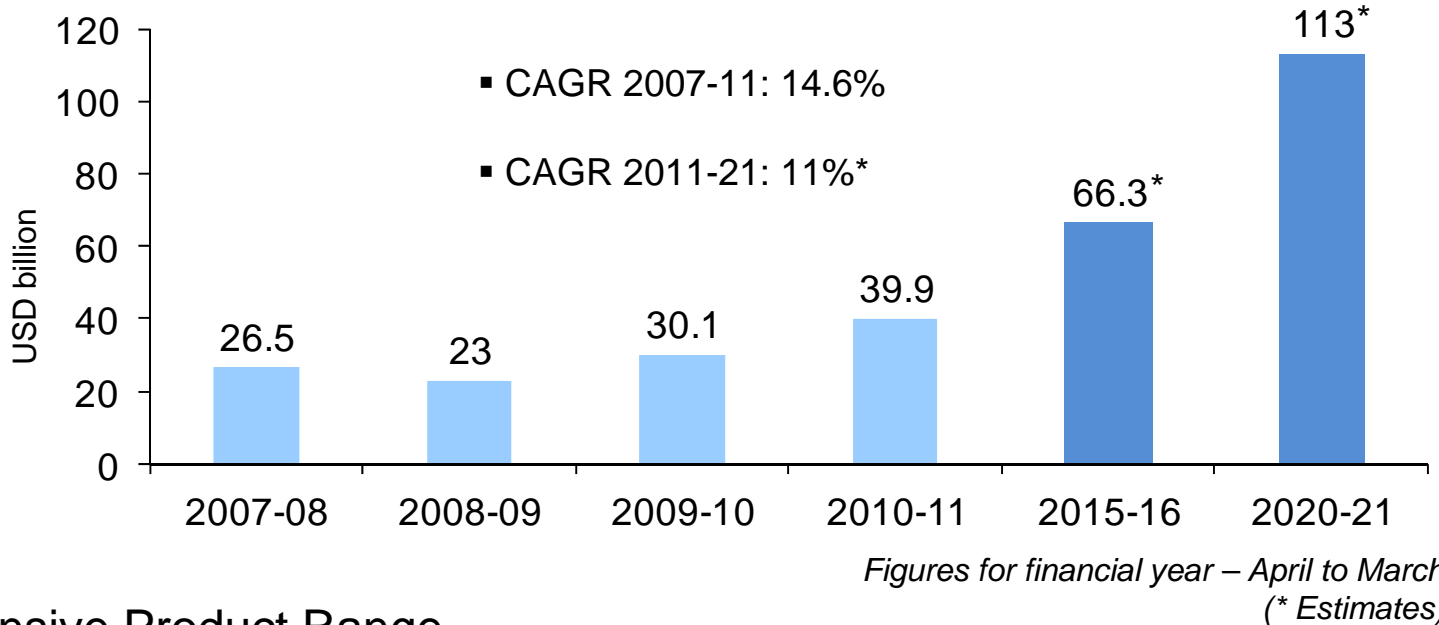
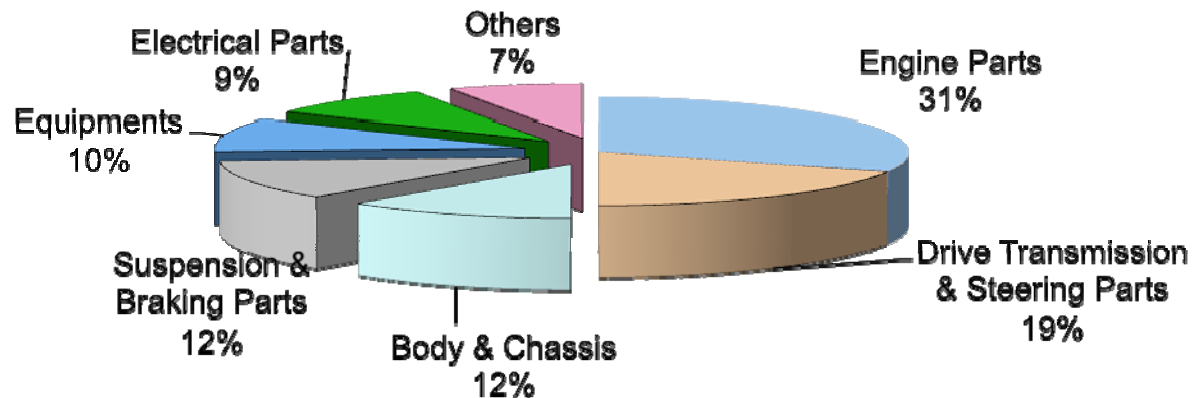


# Auto Component Industry Profile

## Turnover

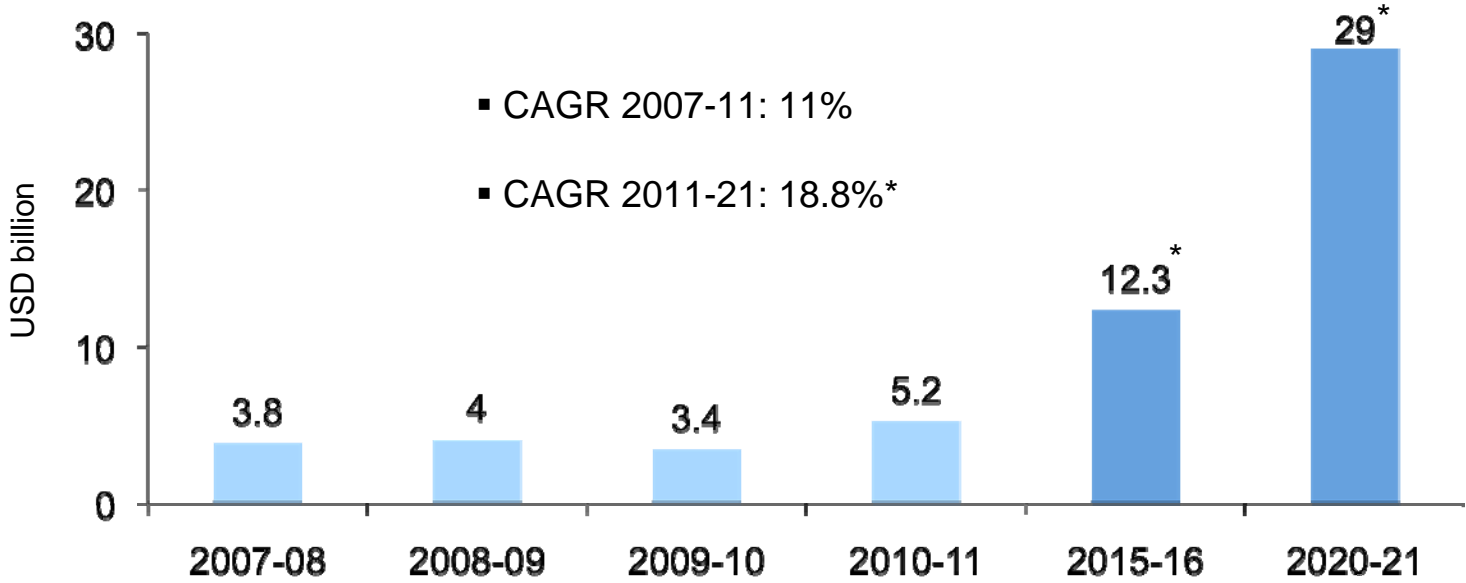


## Comprehensive Product Range



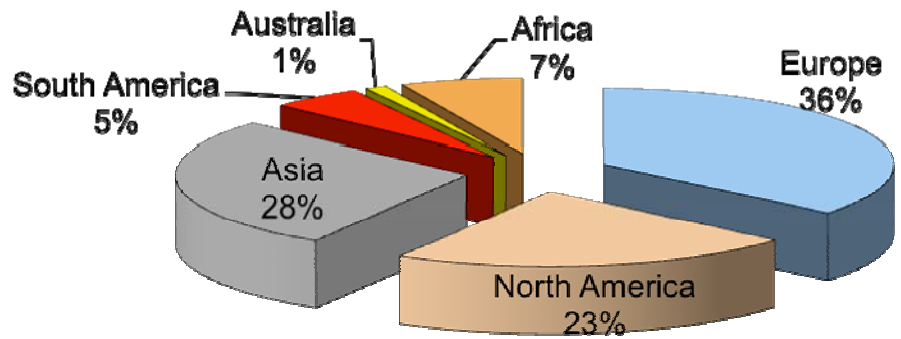
# Auto Component Industry Profile

## Exports



Figures for financial year – April to March  
 (\* Estimates)

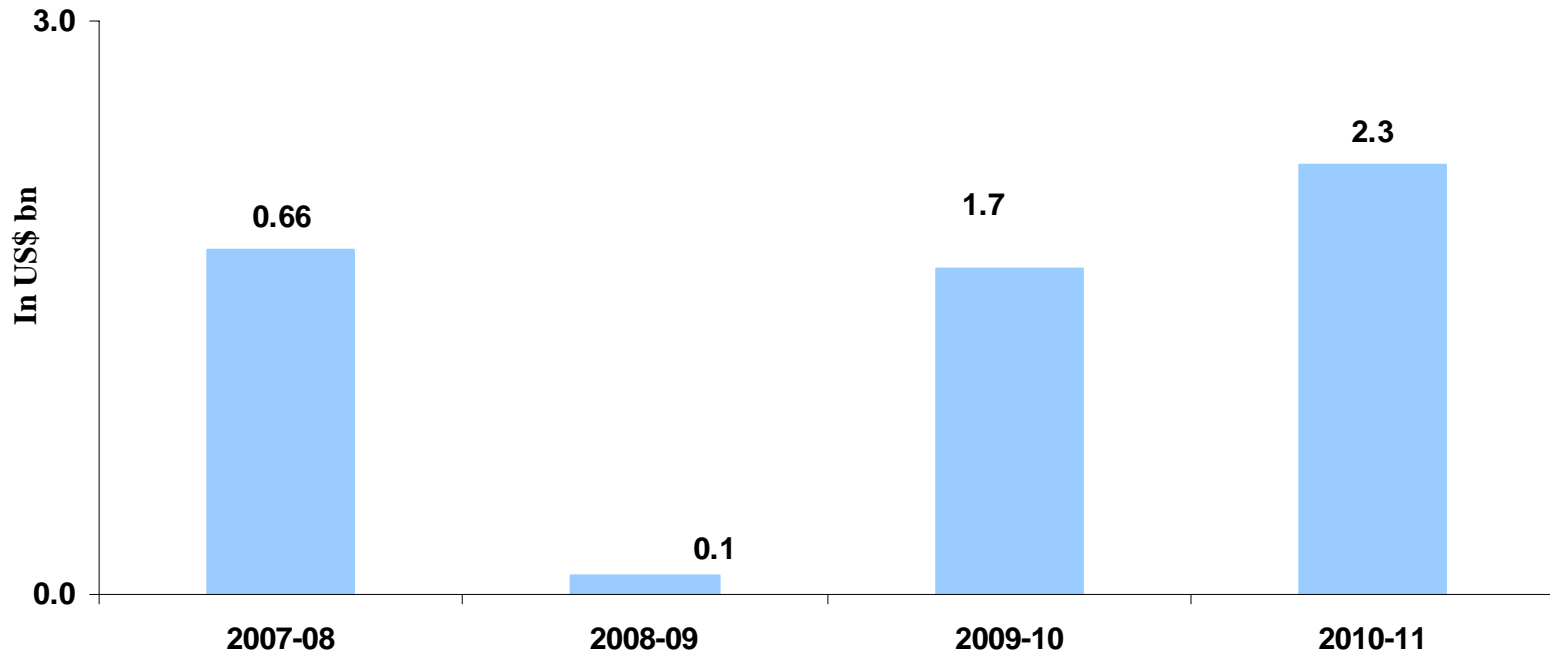
## Export Destinations



OEM/Tier 1 account for 80%; Aftermarket for 20%

# Auto Component Industry Investments

Investments



~\$ 2.5bn Investment is expected next year